

INSTRUCTIONS FOR CORRECT INSTALLATION AND USE

The safety of this fitting can only be guaranteed if these instructions are observed, during both installation and use. Please retain these instructions safety.

- If not familiar with electrical connections, we recommend you contact a qualified electrician.
- When installing and whenever acting on the appliance, ensure that the power supply has been switched off.
- The appliance may in no way be modified or tampered with, any modification may compromise safety causing the appliance to become dangerous.
- PARACHILNA declines all responsibility for products that have been modified.
- Assembly and maintenance of fixture must be performed carefully so as not damage components.
- PARACHILNA will replace merchandise with manufacturing defects only if it is returned to the retailer from which it was purchased.
- PARACHILNA declines any responsibility once a original component might be replaced
- If exposed to direct sunlight, the materials used in this product may show a natural chromatic variation.
- Use only a soft cloth to clean the appliance, dampened with water and soap or mild cleanser if needed for resistant dirt. Do not use alcohol or similar solvent.
- If the external flexible cable or cord of this luminaire is damaged, it shall be exclusively replaced by the manufacturer or his service agent or a similar qualified person in order to avoid a hazard.



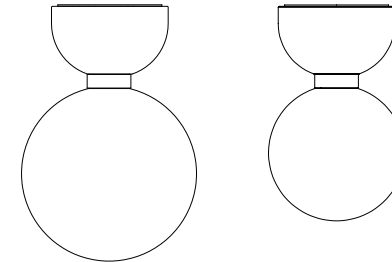
The glass in this product has been produced by a craftsman, as evidenced by small imperfections.



PARACHILNA S.A.
Filatures 1-8 Colonia Güell
T. +34 936 307 772
08690 Sta. Coloma de Cervelló
Barcelona, Spain
info@parachilna.eu
www.parachilna.eu

068110700000

PARACHILNA



ABALLS A II ME - ABALLS A II PE
by Jaime Hayón

RATED VOLTAGE: 12V DC

POWER SUPPLY: USB 3.0 12V outlet (USB adapter NOT included)

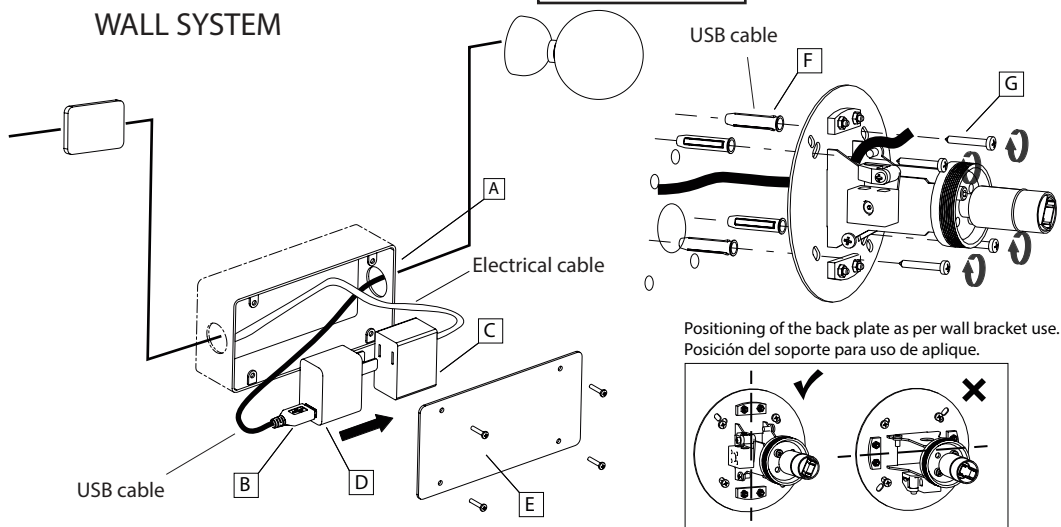
额定电压：直流12V；电源接口：USB3.0 12V电源接口（本品不含电源适配器）

1 THIS IS A ONE PERSON INSTALLATION
SE PRECISA UNA PERSONA PARA
LA INSTALACIÓN



A, C, D, E NOT
INCLUDED

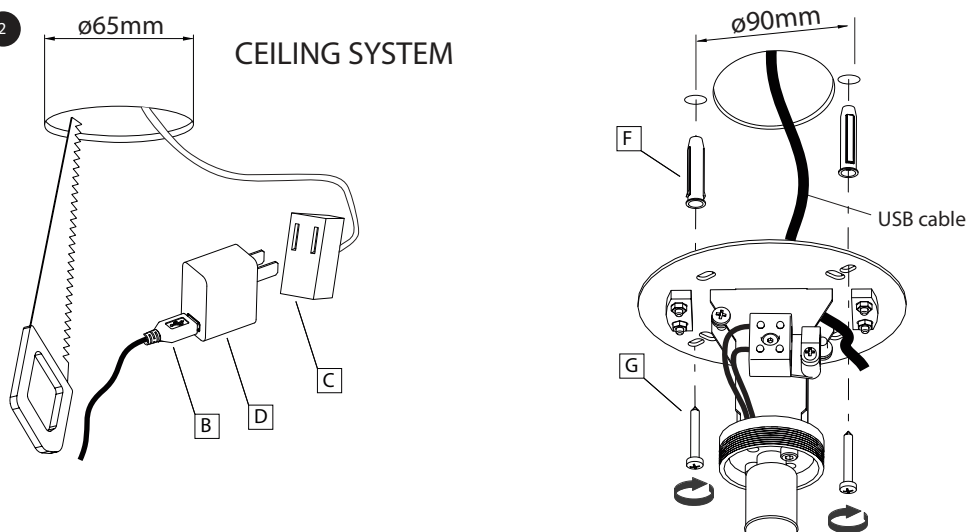
WALL SYSTEM



EN To do the lighting installation all the components indicated in the drawing are required.
Open the junction box (A), connect the USB cable to USB terminal (B) and connect the electrical wire to the female plug (C).
Now you can connect the USB cable (B) to the USB driver (D) and the USB driver (D) to the female plug (C).
Then enter all in the junction box (A) and close it with the cover (E).
Make the holes and place the plastic plugs (F). Then fix the lighting to the wall by screwing it with screws (G).

如上图所示，在恰当位置预埋接线盒A，将USB电源线引入该接线盒。本产品不自带ABCDE部件，上述部件规格，参照底座上的孔位在墙上打孔，用适合的膨胀螺丝固定底座。

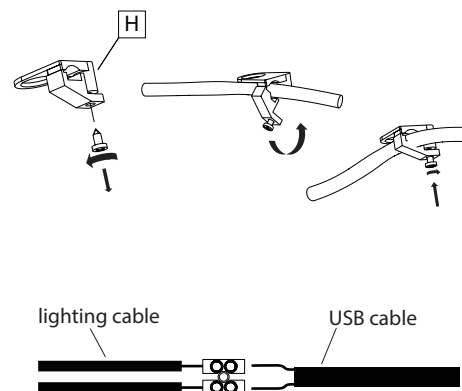
2 CEILING SYSTEM



EN Make a circle cut of 65 cm on the ceiling of plaste board.
Connect the USB cable to USB terminal (B) and connect the electrical wire to the female plug (C).
Now you can connect the USB cable (B) to the USB driver (D) and the USB driver (D) to the female plug (C).
Make the holes and place the plastic plugs (F). Then fix the lighting to the ceiling by screwing it with screws (G).

吸顶灯的安装方式：天花板开直径65mm圆孔，如上图固定支架。本产品不自带D,C部件，上述部件规格，请洽经销商。

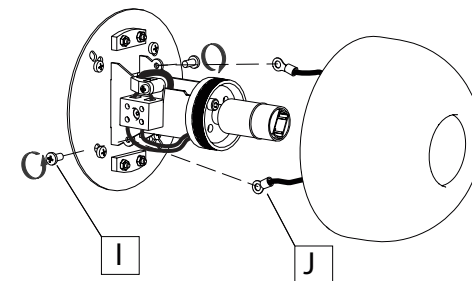
3



EN Fasten wire grip (H) over electrical wire to secure it within the rose. Make electrical connections.

请洽经销商。

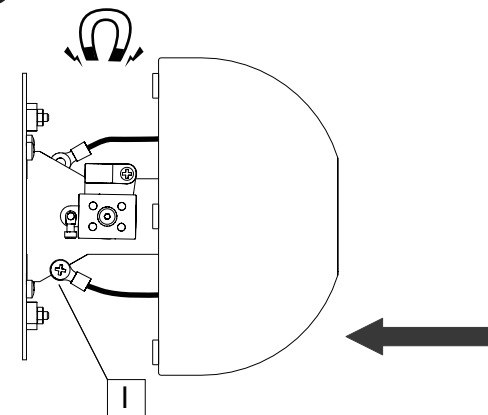
4



EN Unfasten the screws (D) and place ceramic security cables (E).

通过连接器将USB电源线和灯具电源线接在一起。
按以上示意图将外壳的 保险绳端子
“J” 固定在底座螺丝 “I” 上。

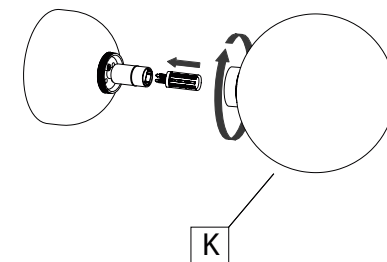
5



EN Position the body on the mounted bracket and place and screw (I) again to fix the security cables. The magnets will hold the ceramic at its position.

依靠磁铁的力量，让外壳紧贴在灯座支架上。

6



EN Position the G9 12V LED light bulb. Rated voltage 12V.
Screw the diffuser (K) over the lighting's body.

按上图依次安装G9 12V LED灯泡，以及外灯罩K。